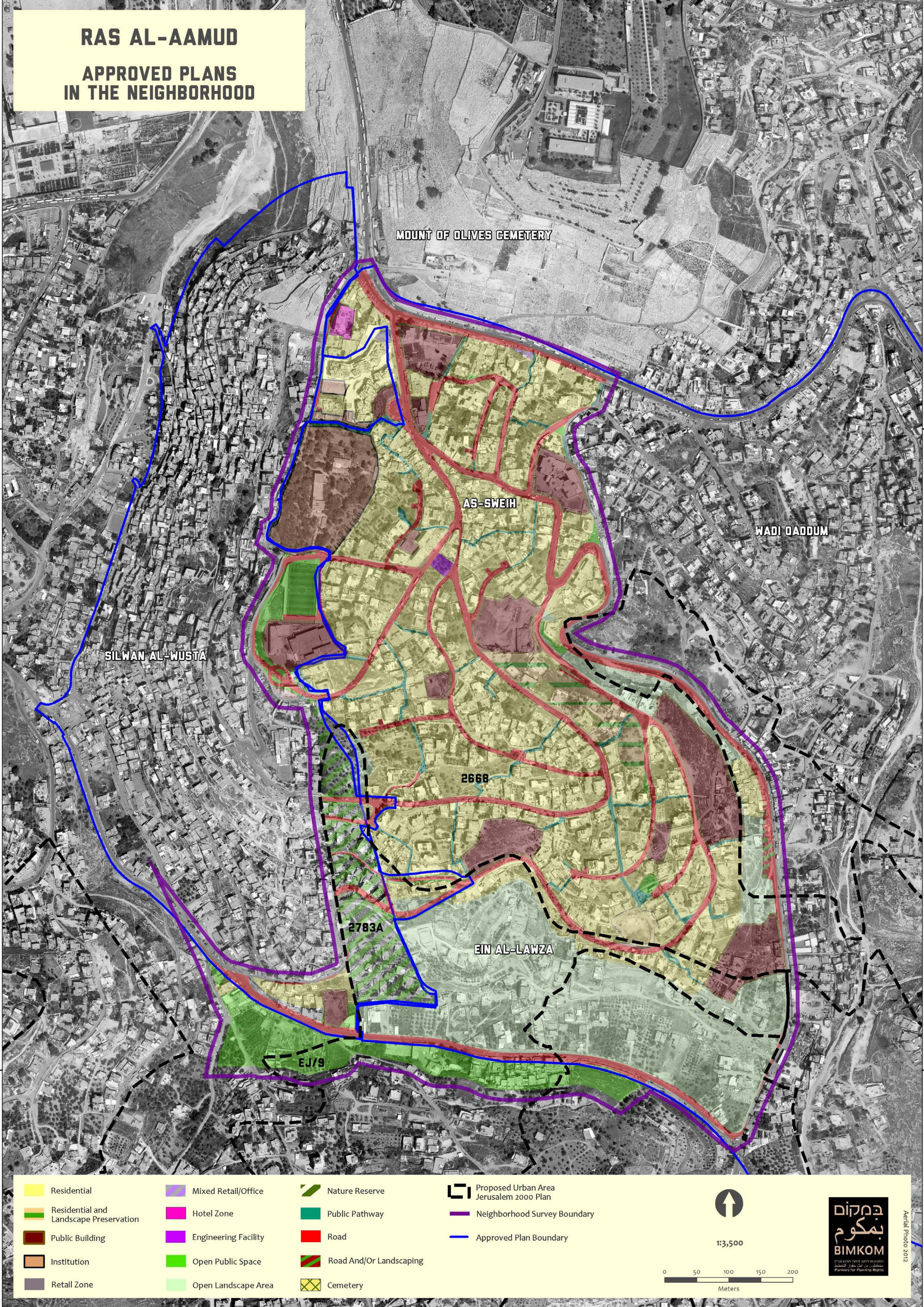


RAS AL-AAMUD

APPROVED PLANS IN THE NEIGHBORHOOD

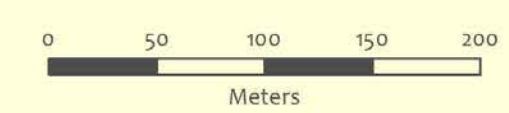


- | | | |
|--|----------------------|-------------------------|
| Residential | Mixed Retail/Office | Nature Reserve |
| Residential and Landscape Preservation | Hotel Zone | Public Pathway |
| Public Building | Engineering Facility | Road |
| Institution | Open Public Space | Road And/Or Landscaping |
| Retail Zone | Open Landscape Area | Cemetery |

- | |
|---|
| Proposed Urban Area Jerusalem 2000 Plan |
| Neighborhood Survey Boundary |
| Approved Plan Boundary |



1:3,500



Aerial Photo 2012