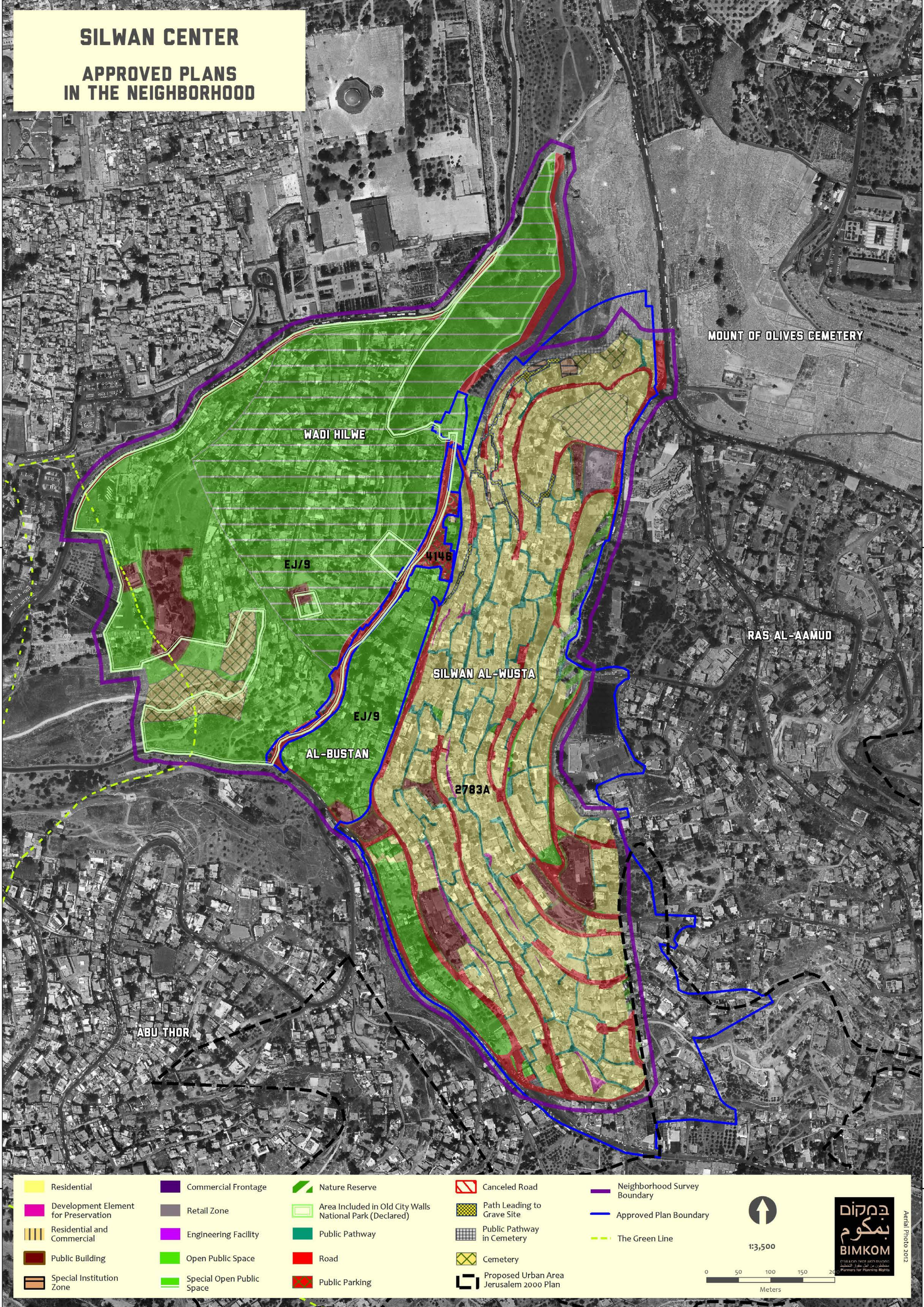


SILWAN CENTER
APPROVED PLANS
IN THE NEIGHBORHOOD



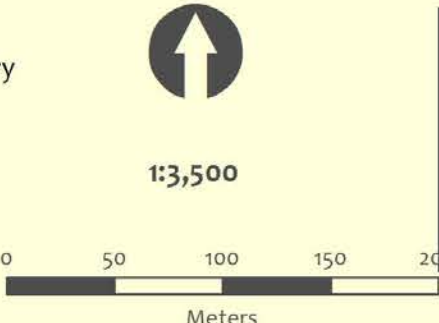
- Residential
- Development Element for Preservation
- Residential and Commercial
- Public Building
- Special Institution Zone

- Commercial Frontage
- Retail Zone
- Engineering Facility
- Open Public Space
- Special Open Public Space

- Nature Reserve
- Area Included in Old City Walls National Park (Declared)
- Public Pathway
- Road
- Public Parking

- Canceled Road
- Path Leading to Grave Site
- Public Pathway in Cemetery
- Cemetery
- Proposed Urban Area Jerusalem 2000 Plan

- Neighborhood Survey Boundary
- Approved Plan Boundary
- The Green Line



Aerial Photo 2012