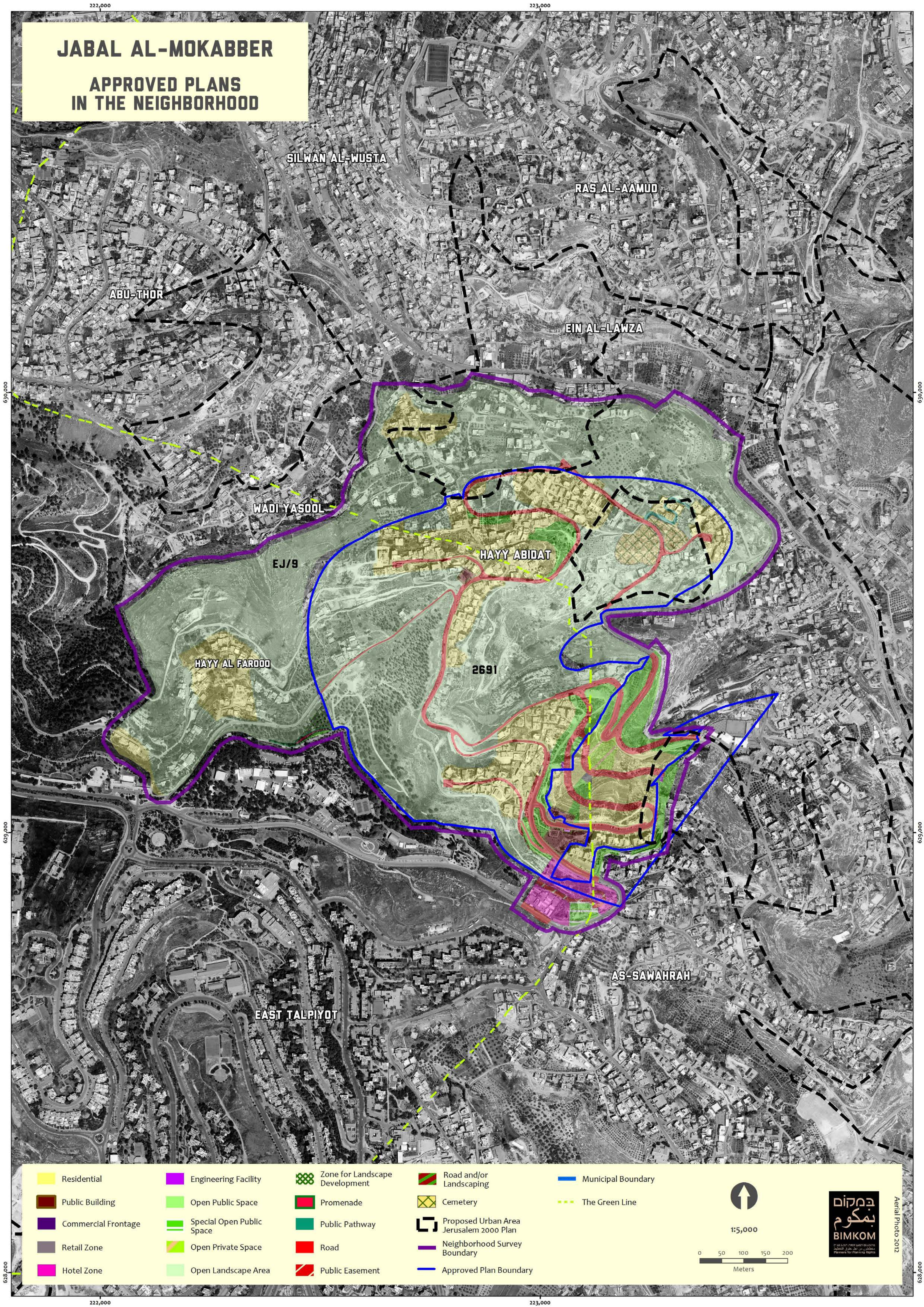


JABAL AL-MOKABBER

APPROVED PLANS IN THE NEIGHBORHOOD



Residential

Public Building

Commercial Frontage

Retail Zone

Hotel Zone

Engineering Facility

Open Public Space

Special Open Public Space

Open Private Space

Open Landscape Area

Zone for Landscape Development

Promenade

Public Pathway

Road

Public Easement

Road and/or Landscaping

Cemetery

Proposed Urban Area Jerusalem 2000 Plan

Neighborhood Survey Boundary

Approved Plan Boundary

Municipal Boundary

The Green Line



1:5,000

0 50 100 150 200
Meters

במקום
במקום
BIMKOM
מחלקת תכנון ופיתוח
מחלקת תכנון ופיתוח
Plans for Planning Rights

Aerial Photo 2012