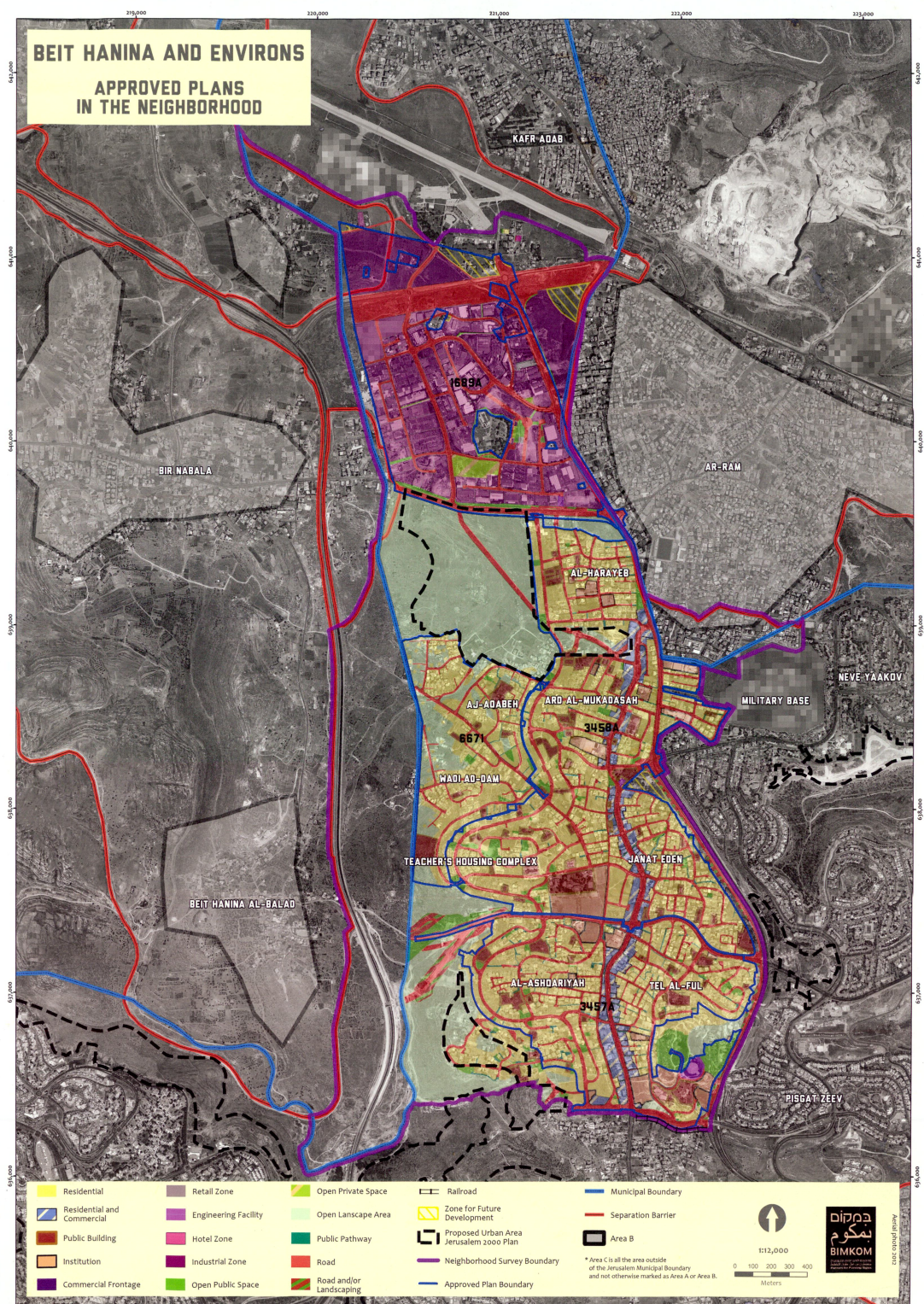


BEIT HANINA AND ENVIRONS

APPROVED PLANS IN THE NEIGHBORHOOD



- | | | | | |
|---|---|--|--|---|
| Residential | Retail Zone | Open Private Space | Railroad | Municipal Boundary |
| Residential and Commercial | Engineering Facility | Open Landscape Area | Zone for Future Development | Separation Barrier |
| Public Building | Hotel Zone | Public Pathway | Proposed Urban Area Jerusalem 2000 Plan | Area B |
| Institution | Industrial Zone | Road | Neighborhood Survey Boundary | Approved Plan Boundary |
| Commercial Frontage | Open Public Space | Road and/or Landscaping | | |

* Area C is all the area outside of the Jerusalem Municipal Boundary and not otherwise marked as Area A or Area B.



1:12,000

0 100 200 300 400
Meters

